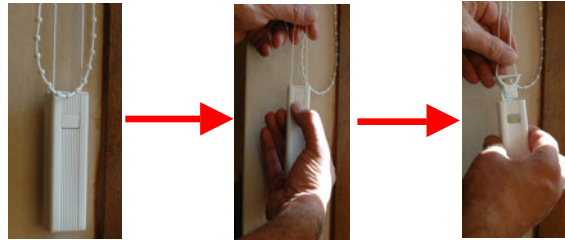


Fitting Instructions

The following instructions are suitable for either roller blinds or vertical blinds, they are meant as a general guide to give you a understanding on how to fit your device.

Step 1

Remove the cord weight from your existing blind
The pictures show the most common type of cord weight, yours might be different.

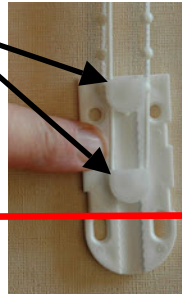


Step 2

Loop the Chain and the Cord around the tensioning lugs as shown in the picture.

If you are fitting the Tie Back the tensioning lug should not be pushed below this line

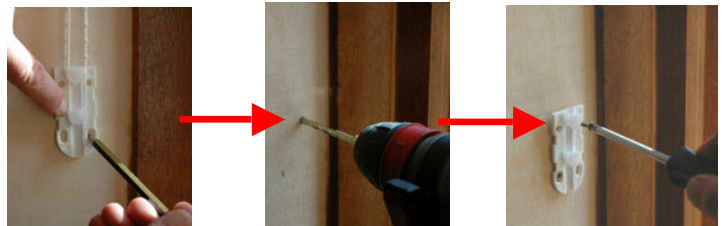
Tensioning Lug



It may be necessary to adjust the length of either the chain or the cord to fit the lugs. It is usually easier to adjust the chain. The Lugs will slide down the housing to provide the tension. The lugs will only slide down the body, if you over adjust the lug simply push it all the way down out of the body and reinsert from the top

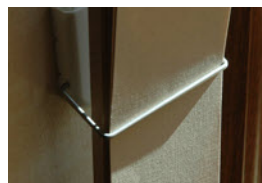
Step 3

Mark out the position of the holes, and screw to surface, it may be necessary to drill depending on the surface.



Step 4

Snap the cover into place, if you ordered the Tie Back this can now be fitted. Remove the plastic cap from the bar, slide the bar into the body and replace the plastic cap.



To use the Tie Back simply lift the bar and slide the fabrics behind the bar as shown.

The process for fitting the roller blind safety device is similar to the vertical blind device, the main difference being the roller blind device only has one lug.

The connector on the operating chain needs to be positioned so it does not pass through the device.

If you have any problems or need any help you can E mail: support@beverleyblinds.co.uk or call us on 02476 644684.